



63 Loder Road
Brighton, BN1 6PL



63 Loder Road

Brighton, BN1 6PL

Offers over £850,000

Welcome to this beautifully presented four-bedroom Victorian terrace, situated on the ever-popular Loder Road in Brighton. Offering over 1,600 sq ft of thoughtfully extended and modernised living space, this elegant family home blends period charm with contemporary comforts, just moments from local amenities, high regarded schools, and excellent transport links.

Step into a welcoming bay-fronted living room, complete with bespoke shelving, plantation shutters, and warm wooden flooring. The rear of the property opens into a striking open-plan kitchen/dining area with a large island, quartz worktops, integrated appliances, and full-width Crittall-style doors opening onto the garden. Skylights and clever lighting create a wonderfully bright and spacious feel, ideal for entertaining or family life. A useful WC is also located on this floor.

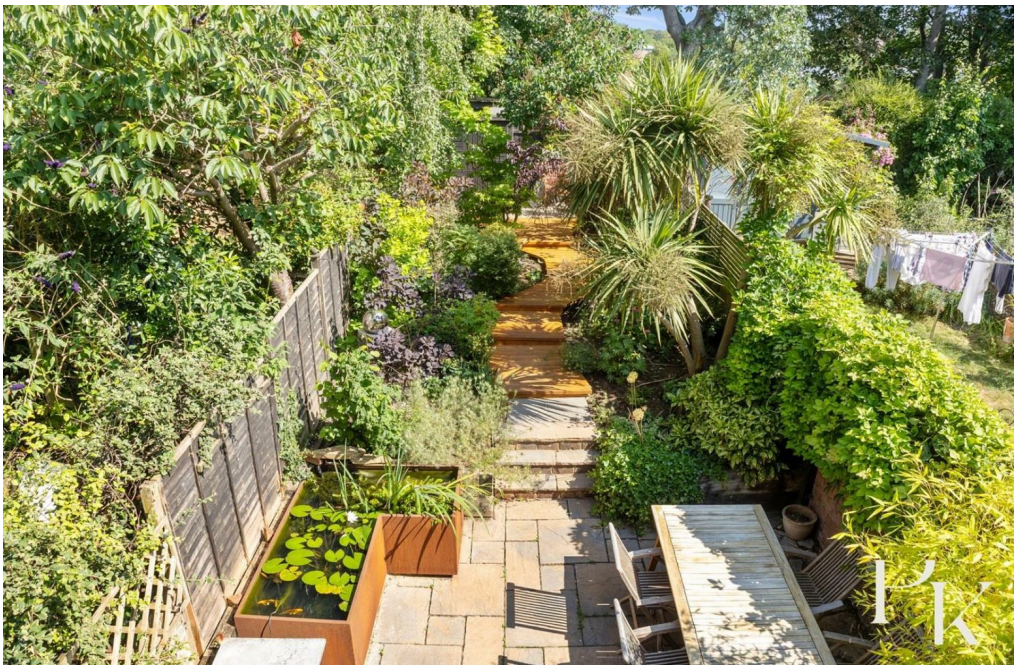
The first floor features a generously proportioned principal bedroom with an en-suite shower, spanning the full width of the house, with built-in storage and views over the quiet street. To the rear, a second double bedroom with Juliet balcony overlooks the garden. A stylish and contemporary family bathroom with metro tiling and vanity unit completes this floor.

The loft has been expertly converted to provide two further bedrooms, both bright and airy thanks to large Velux windows, perfect for children, guests, or home office space. A modern shower room with sleek finishes serves this floor.

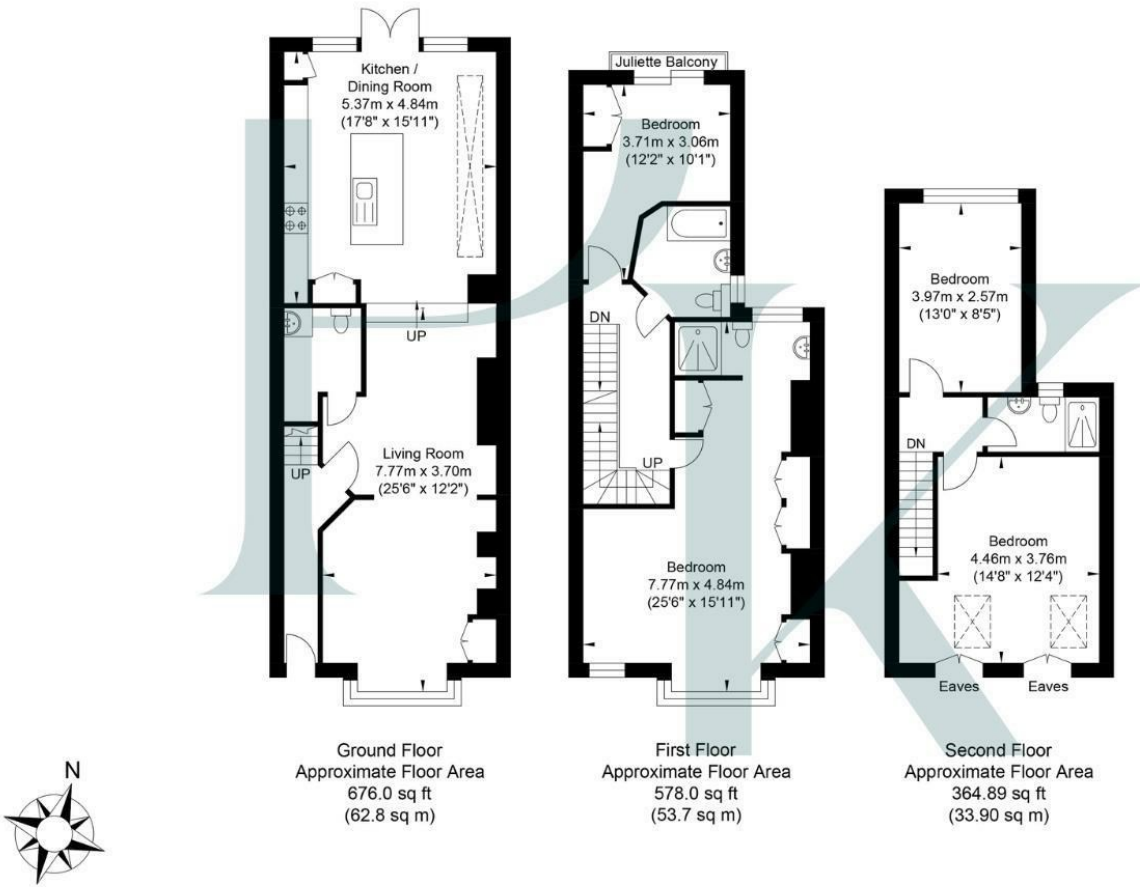
The beautifully landscaped rear garden is a true highlight – a tranquil urban oasis with mature planting, raised beds, a lily pond, multiple seating zones, and a lovely decked pathway leading to a secluded area ideal for outdoor dining or play.

Loder Road is a peaceful, tree-lined residential street in the desirable Prestonville area of Brighton, known for its attractive Victorian architecture and strong community feel. Ideally located just a short walk from Preston Park, residents enjoy easy access to open green space, tennis courts, a café, and regular local events. The area offers a range of local shops and independent cafes along Prestonville Road and Dyke Road, while Brighton city centre, North Laine, and the seafront are all easily reachable by bus, bike, or car. Brighton Station is under 10 minutes away on foot, providing fast, direct trains to London and other major destinations, with the A23/A27 also close by for drivers.

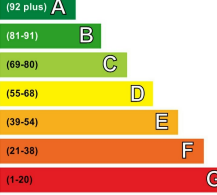

Families are especially drawn to the area due to its inclusion in the catchment for several highly regarded schools, including Stanford Infant and Junior Schools, St. Paul's CE Primary, Dorothy Stringer, and Varndean, with excellent private options such as Brighton College and Windlesham School also nearby.



Loder Road



Approximate Gross Internal Area = 150.4 sq m / 1618.89 sq ft
Illustration for identification purposes only, measurements are approximate, not to scale.

Energy Efficiency Rating		Current	Potential
Very energy efficient - lower running costs			
			86
		75	
Not energy efficient - higher running costs			
England & Wales		EU Directive 2002/91/EC	

Environmental Impact (CO ₂) Rating		
	Current	Potential
Very environmentally friendly - lower CO ₂ emissions		
(92 plus) A		
(81-91) B		
(69-80) C		
(55-68) D		
(39-54) E		
(21-38) F		
(1-20) G		
Not environmentally friendly - higher CO ₂ emissions		
England & Wales		
EU Directive 2002/91/EC		

Pearson
Keehan